

ADVISING SHEET

Dentistry is a profession that combines science and technology with helping people to enhance and maintain their oral health. As health care practitioners, dentists diagnose, treat, and help prevent diseases, injuries and malformations of the teeth and gum. Two classifications for dentists include: Doctor of Dental Surgery (D.D.S.); and Doctor of Medical Dentistry (D.M.D.) (there is no difference between the two degrees).



Dental education programs are four years of in-class, pre-clinical, and clinical instruction. The first two years usually cover the basic sciences and the last two years, diagnosing oral disease, surgery, and clinical study. In the fourth year, students typically must complete a dental rotation externship. In addition to general dentistry, dental schools may offer specialized postgraduate programs of study, in areas such as oral and maxillofacial surgery, orthodontics, or pediatric dentistry, which can take an additional two to six years to complete. Lastly, some dental schools offer joint degree programs that can include Master's & Ph.D. degrees in oral biology & the basic sciences, as well as an MPH and MBA.

Common Pre-Dentistry prerequisite Courses

Biology	One year of coursework with lab	BISC 120Lg & BISC 220Lg	OR	BISC 121Lg & BISC
Chemistry	One year of coursework with lab	CHEM 105aLg & CHEM 105bL	OR	CHEM 115aLg & CHEM 115bL
Organic Chemistry	One year of coursework with lab	CHEM 322aL & CHEM 322bL	OR	CHEM 325aL & CHEM 325bL
Physics	One year of coursework with lab	PHYS 135aLg & PHYS 135bL	OR	PHYS 151Lg & PHYS 152L
Mathematics	One semester is recommended yet required by other dental schools. Some schools prefer one semester of calculus, while others prefer statistics. Please check with each dental school for more information.	MATH 125g or MATH 126 OR MATH 208x or BISC 305 or HP 340 or PSYCH 274g or equivalent stats course		
Molecular Bio	One semester is recommended yet required by other dental schools	BISC 320Lg		
Biochemistry	One semester is recommended yet required by other dental Schools	BISC 330L		
3-Dimensional Art	Many Dental schools strongly recommend at least one course in sculpture to develop manual dexterity and spatial orientation skills.	ART 140 or ART 443 or ART 142/444		
English	One year is required for most dental schools in the U.S.	WRIT 150 and WRIT 340		

Additional subjects recommended by most U.S. Dental Schools

Anatomy, Physiology or Microbiology	Basic or advanced level sciences courses are recommended yet required by some dental schools. Please refer to ADEA Official Guide to Dental Schools for more information.	HBIO 301L or BISC 307L or BISC 300L
Humanities/Social Science	Many Dental schools strongly recommend a course in Psychology, Sociology, Philosophy, History, Communications (Speech), Business or Economics.	General Education & elective courses

SPECIALTIES

General Dentistry
Dental Public Health
Endodontics
Oral and Maxillofacial Pathology

Oral Maxillofacial Radiology
Oral and Maxillofacial Surgery
Orthodontics
Dentofacial Orthopedics

USCDornsife

Dana and David Dornsife
College of Letters, Arts and Sciences

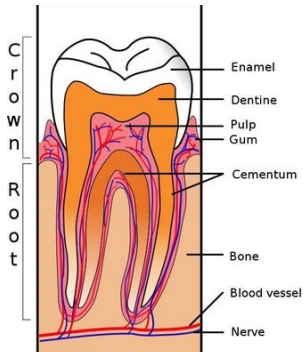
Office of Pre-Health Advisement

University of Southern
California
Office of Pre-Health
Advisement
3641 Watt Way, HNB 120
Los Angeles, CA 90089

Tel: (213) 740-4844
Fax: (213) 740-5653

E-Mail:
prehealth@dornsife.usc.edu

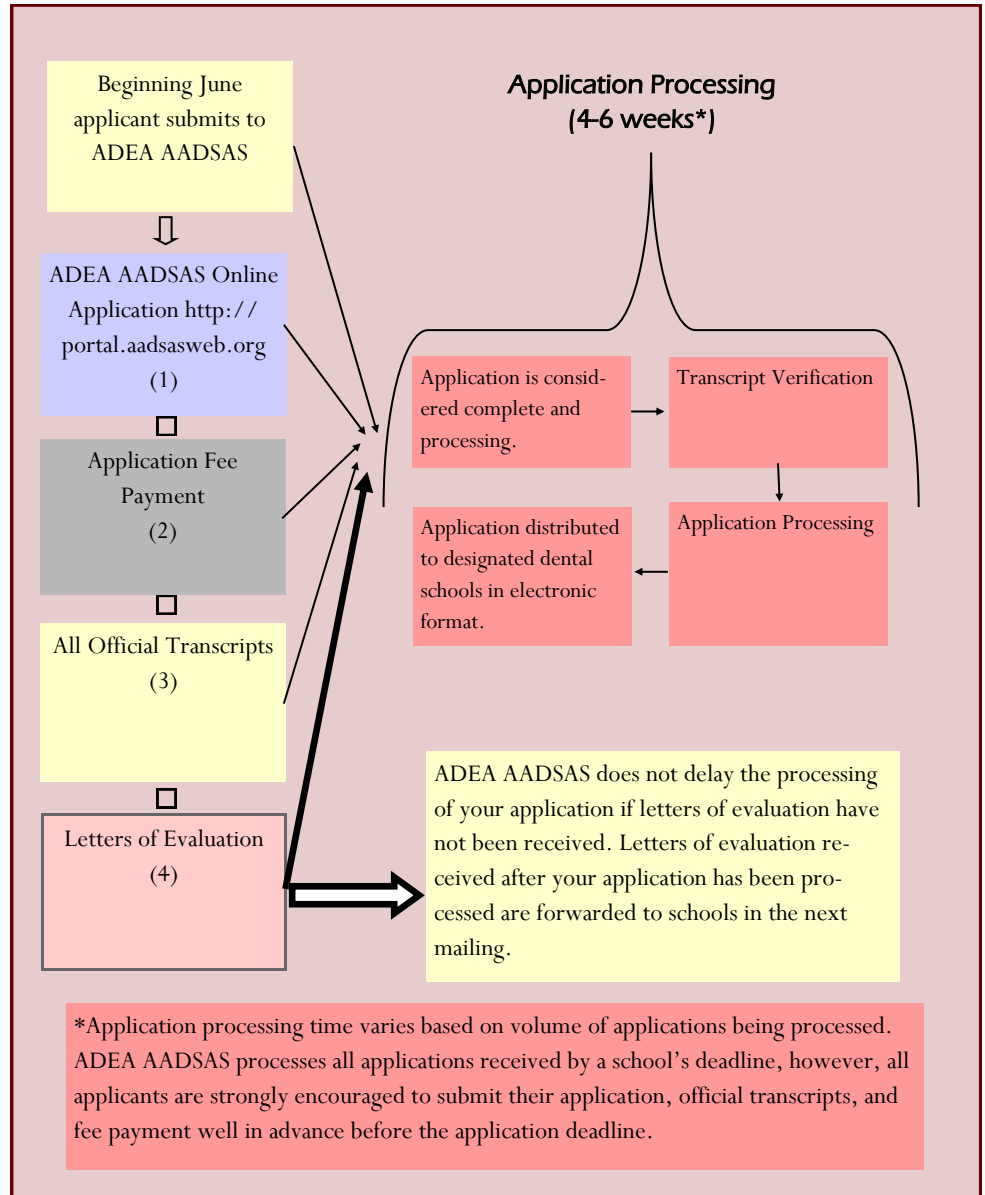
Website:
<http://dornsife.usc.edu/pre-health>



Like us on Facebook &
Instagram!!
@USCPREHEALTH

APPLICATION PROCESS

Outline of the general application process



RESOURCES

American Dental Education Association
www.adea.org

American Dental Association
www.ada.org

American Student Dental Association
www.asdanet.org

Associated American Dental Schools Application Service: <https://portal.aadsasweb.org/>

Dental Admission Test
<http://www.ada.org/dat.aspx>

ADEA Official Guide to Dental Schools
<http://www.adea.org/publications/Pages/OfficialGuide.aspx>

Student National Dental Association
<http://www.sndanet.org/>

Delta Delta Sigma –Dental Honors Society
<http://www.deltadeltasigma.net/>

International Dental Association Volunteer Organizations
<http://internationalvolunteer.ada.org/>

This information is comprehensive and should not be used as your online advising tool. Research each school for a complete listing of requirements.